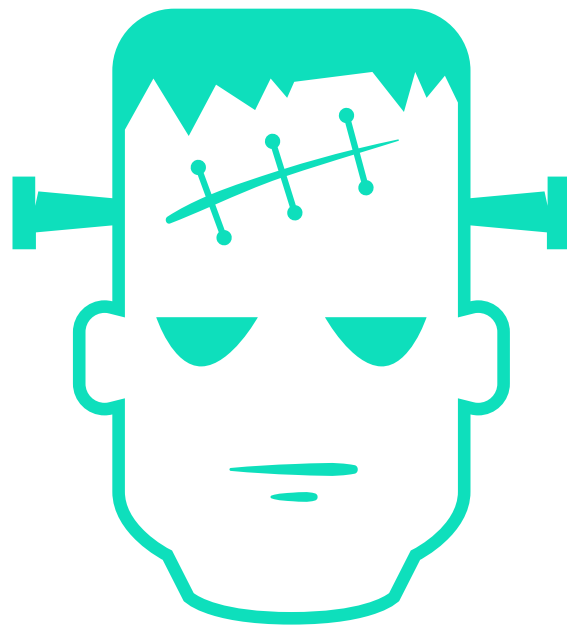


Frankenstein



GCSE English Literature Key Vocabulary

Definitions and morphemic analysis



Introduction

This booklet helps support the explicit teaching of English Literature vocabulary. The words have been chosen for their relevance to the subject as well as their morphemic analysis.

Students undoubtedly need to understand subject specific vocabulary for their studies, but knowing the morphemic analysis will also allow students to make connections across the subject, across the curriculum and hand them the ability to find meaning at the point of need.

Each of the Key Vocabulary booklets could be handed to the students for their own study, but below are some possible teaching ideas.

Some teaching ideas:

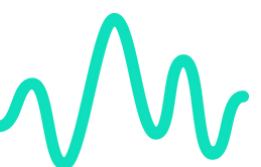
Display the word without definition or morphemic analysis
Ask students – what does it mean and how do you know?
All students discuss the potential meanings

Display the morphemic analysis
Explore how understanding the morphemes (prefixes, suffixes and stems) allows them to find the meaning and develop a gist understanding without having to have a full definition

Explore vocabulary with shared morphemes. Are there common morphemes shared within particular genres? Where else have they encountered vocabulary with those morphemes?

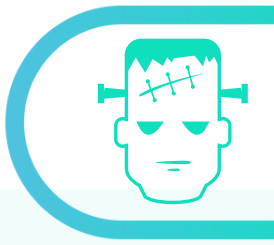
Use new vocabulary in their own writing, both narrative and academic.

If you're interested in exploring the explicit teaching of vocabulary visit enquiries@lexonik.co.uk and ask about Lexonik Vocabulary, a cloud-based morphemic analysis and explicit vocabulary instruction platform.



Key Vocabulary

Frankenstein



satiate

- to satisfy, feed or nourish to the full

Morphemic analysis

/ sat / enough · stem

/ ate / make into, become · suffix

capacious

- able to contain, full of capacity

Morphemic analysis

/ cap / hold · stem

/ ous / full of · suffix

inexorable

- relentless

Morphemic analysis

/ in / not · prefix

/ ex / out · prefix

/ orar / ask, beseech · stem

/ able / can be done · suffix



Key Vocabulary

Frankenstein



inclinations

- natural tendency toward something; an interest in or desire to do something

Morphemic analysis

/ in / in, into · prefix

/ clin / slope, lean, bend · stem

/ tion / act, process, result · suffix

reconciliation

- the act of settling a quarrel and bringing two people or groups back to a friendly relationship

Morphemic analysis

/ con / together, with; altogether · prefix

/ re / again, back, thoroughly · prefix

/ ate / make into, become; put into action · suffix

/ tion / act, process, result · suffix

fastidious

- very attentive to and concerned about accuracy and detail

Morphemic analysis

/ fastus / from Latin, meaning "pride" · stem

/ ous / by nature, full of · suffix



Key Vocabulary

Frankenstein



indefatigable

- persisting tirelessly

Morphemic analysis

/ in / not · prefix

/ de / down, away · prefix

/ fatigue / to tire · root word

/ able / can be done · suffix

indiscriminately

- not treating someone differently because of their race, gender, beliefs, abilities, etc.

Morphemic analysis

/ in/ not

/ dis / away, separation · prefix

/ crimin / crime, distinguish · stem

/ ate / treat with · suffix

/ ly / in this way · suffix

benefactors

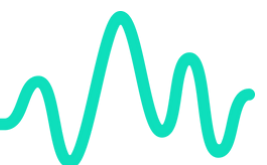
- People who give money or other help to a person or cause

Morphemic analysis

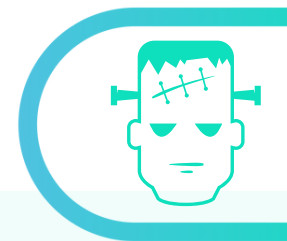
/ bene / good, kind · prefix

/ fac / make, do · stem

/ or / a person or thing performing a task · suffix



Key Vocabulary



Frankenstein

beneficence

- quality of being beneficent, kind, or charitable, practice of doing good

Morphemic analysis

/ bene / good, kind · prefix

/ fic / make, do · stem

/ ence / state, quality; result of an action · suffix

immutable

- unable to be changed

Morphemic analysis

/ im / not · prefix

/ mut / change, go, move · stem

/ able / can be done · suffix

deference

- polite respect for someone in a superior position, e.g. someone older, in authority, etc

Morphemic analysis

/ de / thoroughly · prefix

/ fer / carry, bring; iron · stem

/ ence / state, quality; result of an action · suffix



Key Vocabulary



Frankenstein

empirical

- based on, concerned with, or verifiable by observation or experience rather than theory or pure logic.

Morphemic analysis

/ al / to do with · suffix

/ empire / · root

vindication

- the act of proving something or someone to be innocent, right, reasonable or just; the result of proving this

Morphemic analysis

/ vi / force, strength · prefix

/ dict / speak, declare · stem

/ tion / act, process, result · suffix

alchemist

- a person who transforms or creates something through a seemingly magical process

Morphemic analysis

/ al / to, towards; for; addition, into · prefix

/ ist / someone performing an action; a follower in a system · suffix

/ chemistry / · root

